

Interfacing Winlink2000 with Depiction using Paclink



From the Depiction website...

Depiction lets anyone create their own maps and simulations by bringing together images, data, maps and real-time events into a single living canvas.

Integrated collaboration: Send and receive map data, right from Depiction—and get near-realtime alerts, events and reports via email from anyone in the world, imported directly into your living map.

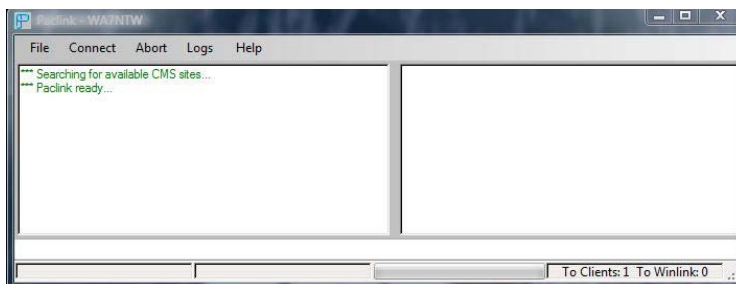
~~~~~  
Using the 'Live Reports' module embedded in the Depiction program results in the capability of importing and exporting points of interest (Element) data (including amplifying information) to be able to see what is happening in a geographical area near real-time.

Interfacing the Depiction 'Live Reports' module with the global Winlink2000 (WL2K) system with the Paclink interface client program provides a 'radio based' solution to process the needed emails for the Live Reports module when normal connectivity to the internet is interrupted. This capability offers a user, cut off from normal means of email communication, a radio path to input and output data electronically and seamlessly for situational awareness.

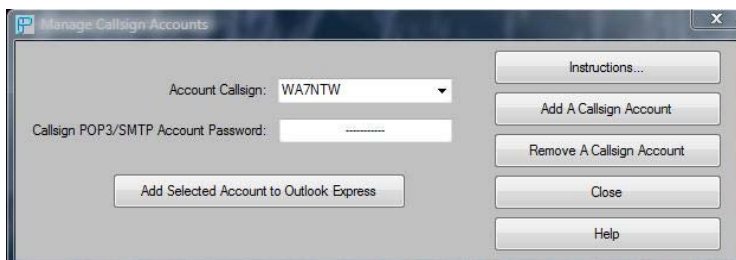
Using the Paclink client program with the WL2K system, the radio path can be a VHF/UHF PACKET or HF PACTOR 1, 2 or 3 circuit depending on the user's equipment. The Paclink program also provides for an internet (TELNET) capability.

There are two parts to connecting the Paclink program to Depiction. The first is setting up the Paclink client.

You can either use a current WL2K account or establish a new one for the specially formatted emails. Due to the account polling activity when running Depiction Live Reports, I recommend that you establish a separate WL2K account to use with Depiction and not combine the email reports in with your normal WL2K message activity.



To establish a new WL2K account, open the 'File' > 'Callsign Accounts' window and enter the WL2K callsign you will be using for Depiction Live Reports and its password. Then click on 'Add A Callsign Account'. The account will then be established.

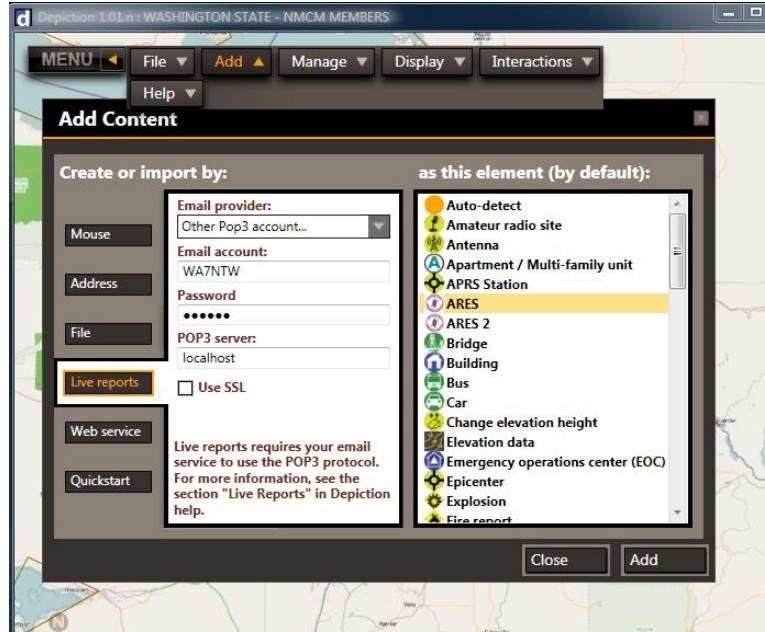


The second step is to set up the Depiction 'Add' > 'Live Reports' module.

Make sure you have Paclink properly setup and open at this point.

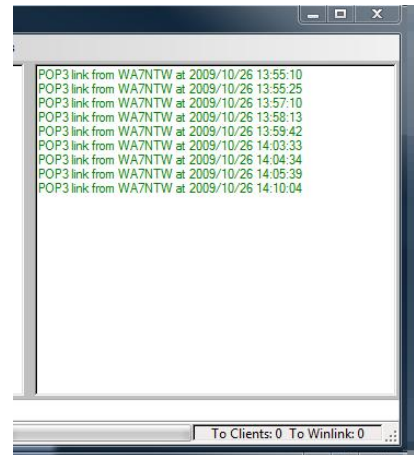
Set the 'Email Provider' window to 'Other Pop3 accounts'.

Enter your WL2K account call sign only (*not* using the @winlink.org) and the appropriate password.



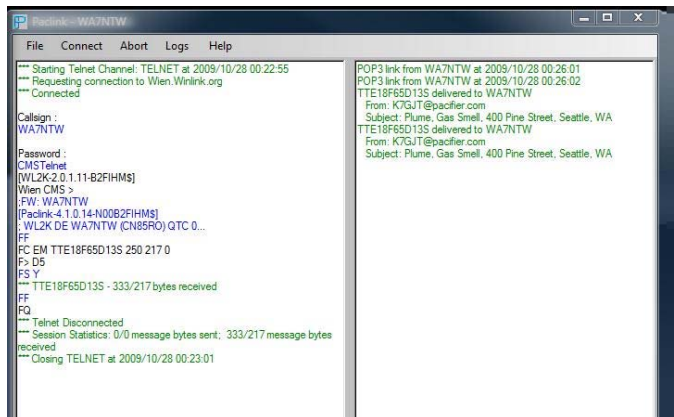
Enter 'localhost' into the POP3 server field and click on the 'Add' button. When you do, the Live Reports module will query the Paclink 'localhost' server and you should see activity in the Paclink right side window as shown to the right.

Depiction will poll the 'localhost' fairly regularly to pick up live report emails for processing and this is normal.



Following the instructions with Depiction on how to format Live Report emails, you can now send live reports to and from your WL2K via the VHF PACKET, HF or TELNET capabilities and Paclink will provide the interface.

The picture on the right shows a report being received by Paclink and delivered from the 'localhost' to Depiction for processing.



A sample Live Reports email is shown here.

**Gary J Takis**

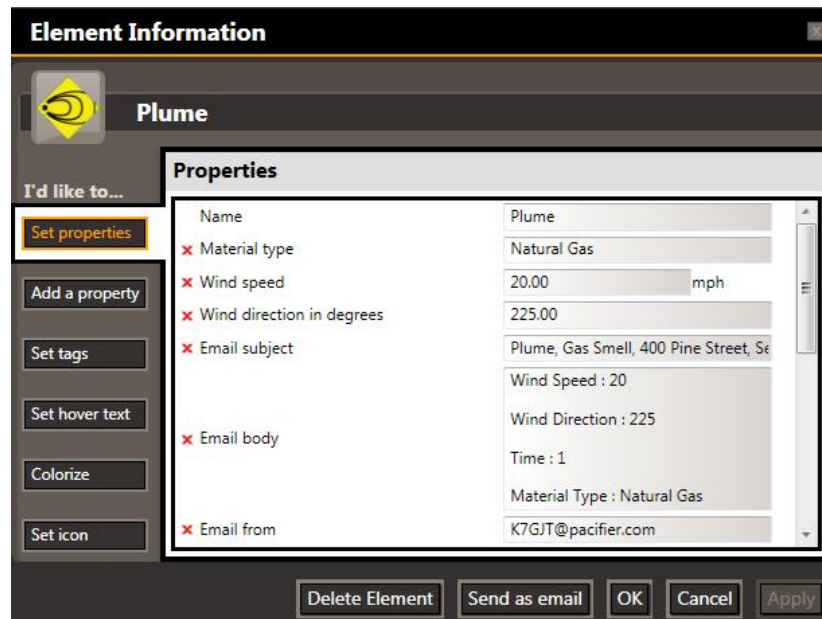
**From:** Gary - K7GJT [K7GJT@pacifier.com]  
**Sent:** Tuesday, October 27, 2009 5:23 PM  
**To:** 'WA7NTW@winlink.org'  
**Subject:** Plume, Gas smell, 400 Pine Street, Seattle, WA

Wind Speed : 20  
Wind Direction : 225  
Time : 1  
Material Type : Natural Gas

The above message results in an Element being created and in this case it was a 'Plume' in the downtown Seattle area.



The picture below shows the Element information that was created that you can view with a mouse click on the Plume Element when the email was received by Live Reports.



Depiction is an amazing information fusing program. Using Winlink as the radio based email solving makes it simply magic!

Note for MARS users. The Depiction Live Reports program does parse out the MARS required precedences in the subject line as shown below.

//MARS Z/ - Flash

//MARS O/ - Immediate

//MARS P/ - Priority

//MARS R/ - Routine

//MARS M/ - MARS Gram

Gary J Takis, K7GJT/NNN0KUL WA