

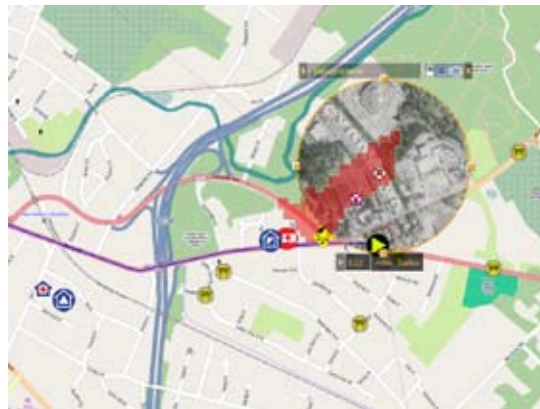
depiction Case Study



PEMSTAR Situational Awareness Specialist

“I am constantly using Depiction to show agencies where things are in the current situation, and what could happen in the future. I also appreciate that once I load a depiction, I don’t have to worry about Internet access. I truly believe that this program can help the community and save lives.”

Michael Craig, owner of Professional Emergency Management Services Training and Resources (PEMSTAR), supports multiple governmental and non-profit emergency management agencies by compiling and distributing maps and reports of emergency and disaster situations as they unfold, as well as visual after-action reports. Craig uses Depiction in conjunction with other mapping tools such as Google Earth and the CAMEO suite to create these reports.



Craig has used Depiction to maintain situational awareness during the massive “Snowmageddon” winter storms of early 2010, as well as multiple flooding disasters, keeping track of damage assessment, power outages, flood levels and more within the program, then sending screenshot to the engaged agencies.

After the failed terrorist attack in Times Square in May of 2010, Craig used Depiction in conjunction with the simulation tools ALOHA and MARPLOT to depict the potential results, had the attack been successful.

He has used Depiction in various other emergencies: using Depiction’s fluid-flow simulation model to determine needed road closures and evacuations after a tanker trailer overturned; building an after-action report for a multi-vehicle accident that resulted in 14 individuals needing medical attention; and preparing disaster maps for members of a federal assistance team preparing to fly to Haiti for earthquake relief.

www.depiction.com

Overview

Profile

Michael Craig, an Emergency Medical Technician for the Montclair Ambulance Unit in New Jersey, has operated PEMSTAR (www.pemstar.biz) since the Summer of 2003, providing inexpensive training, situational awareness and other services to Red Cross Chapters, CERT teams, emergency management offices, and the Salvation Army across four states.

Situation

PEMSTAR has assisted with the response to multiple emergency situations in the Northeast, including the failed bombing attempt in Times Square during May 2010, major winter snowstorms during early 2010 that left millions without power, an overturned tanker trailer in Morris County, New Jersey that spilled an estimated 7,000 gallons of gasoline, various flooding incidents and more.

Benefits

PEMSTAR has used many of Depiction’s mapping and simulation capabilities during various incidents. By integrating multiple images and data sources and formats, Depiction enables PEMSTAR to create situation reports both during and after an incident. Depiction’s simulation tools, and compatibility with tools such as ALOHA and MARPLOT enable PEMSTAR to quickly model and display possible disasters, from gas spills to terrorist attacks.

depiction
...More than Mapping®